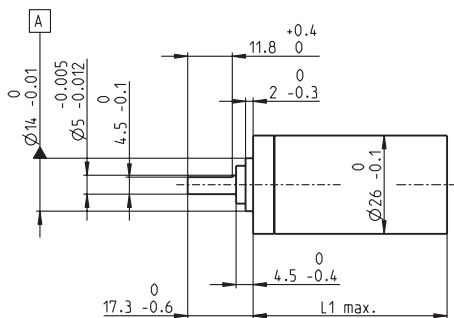


Planetary Gearhead GP 26 B $\varnothing 26$ mm, 0.5 - 2.0 Nm

Ceramic Version



M 1:2

Technical Data

Planetary Gearhead	straight teeth
Output shaft	stainless steel, hardened
Bearing at output	ball bearing
Radial play, 10 mm from flange	max. 0.08 mm
Axial play at axial load	< 4 N 0 mm > 4 N max. 0.05 mm
Max. radial load, 10 mm from flange	70 N
Max. permissible axial load	100 N
Max. permissible force for press fits	100 N
Sense of rotation, drive to output	=
Recommended input speed	< 8000 rpm
Recommended temperature range	-40 ... +100°C

- Stock program
- Standard program
- Special program (on request)

Order Number

	144026	144029	144035	144041	144045	144051	144057	144059	144066	144072	144078
Gearhead Data											
1 Reduction	3.8 : 1	14 : 1	53 : 1	104 : 1	198 : 1	370 : 1	590 : 1	742 : 1	1386 : 1	1996 : 1	3189 : 1
2 Reduction absolute	15/4	225/16	3375/64	87723/845	50625/256	1055601/28561	59049/100	759375/1024	19834015/114244	285012227/142805	1594323/500
3 Max. motor shaft diameter mm	4	4	4	3.2	4	3.2	4	4	3.2	3.2	4
Order Number	144027	144030	144036	144042	144046	144052	144058	144061	144067	144073	144079
1 Reduction	4.4 : 1	16 : 1	62 : 1	109 : 1	231 : 1	389 : 1	690 : 1	867 : 1	1460 : 1	2102 : 1	3728 : 1
2 Reduction absolute	57/13	855/52	12825/208	2187/20	192375/632	263169/676	1121931/1625	2885625/3328	3947535/2704	7105563/3380	30292137/8125
3 Max. motor shaft diameter mm	3.2	3.2	3.2	4	3.2	3.2	3.2	3.2	3.2	3.2	3.2
Order Number	144028	144031	144037	144043	144047	144053	144060	144062	144068	144074	144080
1 Reduction	5.4 : 1	19 : 1	72 : 1	128 : 1	270 : 1	410 : 1	850 : 1	1014 : 1	1538 : 1	2214 : 1	4592 : 1
2 Reduction absolute	27/5	3249/169	48735/676	41553/325	731025/2704	6561/16	531441/625	10965375/10816	98415/64	177147/80	14348907/3125
3 Max. motor shaft diameter mm	2.5	3.2	3.2	3.2	3.2	4	2.5	3.2	4	4	2.5
Order Number		144032	144038	144044	144048	144054		144063	144069	144075	
1 Reduction		20 : 1	76 : 1	157 : 1	285 : 1	455 : 1		1068 : 1	1621 : 1	2458 : 1	
2 Reduction absolute		81/4	1215/16	19683/125	18225/64	5000211/10985		273375/256	601692057/371293	135005697/54925	
3 Max. motor shaft diameter mm		4	4	2.5	4	3.2		4	3.2	3.2	
Order Number		144033	144039		144049	144055		144064	144070	144076	
1 Reduction		24 : 1	84 : 1		316 : 1	479 : 1		1185 : 1	1707 : 1	2589 : 1	
2 Reduction absolute		1539/65	185193/2197		2777895/8788	124659/260		41668425/35152	15000633/8788	3365793/1300	
3 Max. motor shaft diameter mm		3.2	3.2		3.2	3.2		3.2	3.2	3.2	
Order Number		144034	144040		144050	144056		144065	144071	144077	
1 Reduction		29 : 1	89 : 1		333 : 1	561 : 1		1249 : 1	1798 : 1	3027 : 1	
2 Reduction absolute		729/25	4617/52		69255/208	2368521/4225		1038825/832	373977/208	63950067/21125	
3 Max. motor shaft diameter mm		2.5	3.2		3.2	3.2		3.2	3.2	3.2	
4 Number of stages	1	2	3	3	4	4	4	5	5	5	5
5 Max. continuous torque Nm	0.5	0.6	1.3	1.3	1.8	1.8	1.8	2.0	2.0	2.0	2.0
6 Intermittently permissible torque at gear output Nm	0.8	0.9	1.9	1.9	2.7	2.7	2.7	3.0	3.0	3.0	3.0
7 Max. efficiency %	84	70	59	59	49	49	49	42	42	42	42
8 Weight g	65	86	108	108	130	130	130	152	152	152	152
9 Average backlash no load °	1.0	1.2	1.6	1.6	2.0	2.0	2.0	2.0	2.0	2.0	2.0
10 Mass inertia gcm ²	0.6	0.5	0.4	0.4	0.4	0.4	0.4	0.4	0.4	0.4	0.4
11 Gearhead length L1* mm	29.2	36.0	42.8	42.8	49.6	49.6	49.6	56.4	56.4	56.4	56.4

* for A-max 26 and RE-max 29 L1 is - 2.2 mm



maxon Modular System

+ Motor	Page	+ Sensor / Brake	Page	Overall length [mm] = Motor length + gearhead length + (sensor / brake) + assembly parts									
RE 25	77/79			83.8	90.6	97.4	97.4	104.2	104.2	111.0	111.0	111.0	111.0
RE 25	77/79	MR	262	94.8	101.6	108.4	108.4	115.2	115.2	115.2	122.0	122.0	122.0
RE 25	77/79	Enc 22	264	97.9	104.7	111.5	111.5	118.3	118.3	118.3	125.1	125.1	125.1
RE 25	77/79	HED_ 5540	266/268	104.6	111.4	118.2	118.2	125.0	125.0	125.0	131.8	131.8	131.8
RE 25	77/79	DCT22	276	106.1	112.9	119.7	119.7	126.5	126.5	126.5	133.3	133.3	133.3
RE 25, 20 W	78			72.3	79.1	85.9	85.9	92.7	92.7	92.7	99.5	99.5	99.5
RE 25, 20 W	78	MR	262	83.3	90.1	96.9	96.9	103.7	103.7	103.7	110.5	110.5	110.5
RE 25, 20 W	78	HED_ 5540	267/270	93.1	99.9	106.7	106.7	113.5	113.5	113.5	120.3	120.3	120.3
RE 25, 20 W	78	DCT22	276	94.6	101.4	108.2	108.2	115.0	115.0	115.0	121.8	121.8	121.8
RE 25, 20 W	78	AB 28	318	106.4	113.2	120.0	120.0	126.8	126.8	126.8	133.6	133.6	133.6
RE 25, 20 W	78	HED_ 5540 / AB 28	267/318	123.6	130.4	137.2	137.2	144.0	144.0	144.0	150.8	150.8	150.8
RE 25, 20 W	79	AB 28	316	117.9	124.7	131.5	131.5	138.3	138.3	138.3	145.1	145.1	145.1
RE 25, 20 W	79	HED_ 5540 / AB 28	268/316	135.0	141.8	148.6	148.6	155.4	155.4	155.4	162.2	162.2	162.2
A-max 26	101-108			71.8	78.6	85.4	85.4	92.2	92.2	92.2	99.0	99.0	99.0
A-max 26	102-108	MEnc 13	275	78.9	85.7	92.5	92.5	99.3	99.3	99.3	106.1	106.1	106.1
A-max 26	102-108	MR	262	80.6	87.4	94.2	94.2	101.0	101.0	101.0	107.8	107.8	107.8
A-max 26	102-108	Enc 22	265	86.2	93.0	99.8	99.8	106.6	106.6	106.6	113.4	113.4	113.4
A-max 26	102-108	HED_ 5540	267/269	90.6	97.4	104.2	104.2	111.0	111.0	111.0	117.8	117.8	117.8
RE-max 29	131-134			71.8	78.6	85.4	85.4	92.2	92.2	92.2	99.0	99.0	99.0
RE-max 29	132/134	MR	262	80.6	87.4	94.2	94.2	101.0	101.0	101.0	107.8	107.8	107.8